

# Henpark Poultry



## Produce:

indigenous and dual-purpose live chickens and dressed chickens for premium meat



**Established:**  
2016, registered in 2019



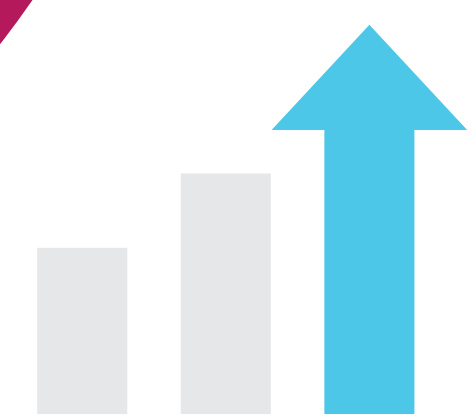
**Location:** Mzimba, Northern Region



**Investment required:**

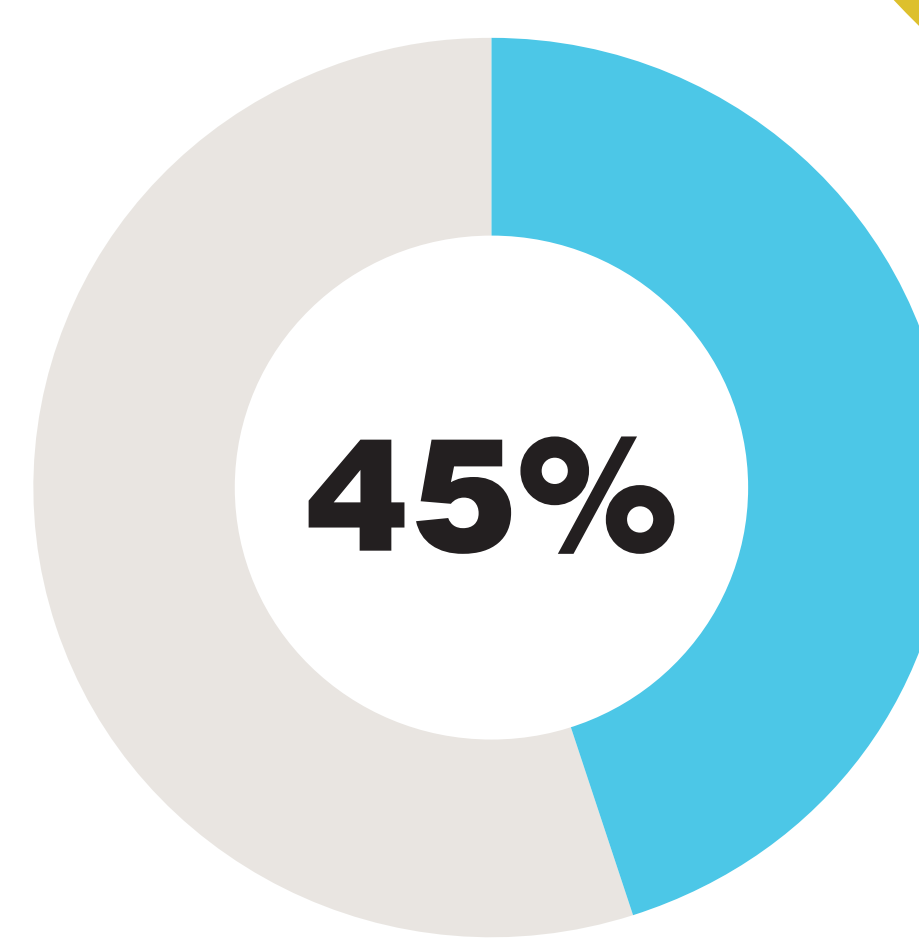
**£43,500**

third party investment-debt



## Demand

Henpark Poultry estimates it is meeting **45% of the potential market** for indigenous and dual-purpose chickens, and seeks investment to capitalize on unmet demand.



## Production

### Premium meat production

473 smallholder farmers currently deliver around 1,000 live chickens each week to Henpark who supply indigenous and dual-purpose breeds to high-value markets including discerning consumers, two supermarkets and hotels in Mzimba and the Northern Region.

Contracted farmers receive 12 six-week-old chicks on credit, rear them and supply chickens back to Henpark after 18 weeks. The company quarantines and finishes the birds over a two-week period. Henpark currently doesn't have a processing unit so supplies live birds or hires temporary workers to slaughter and dress the chickens. The company has acquired seven hectares of land for the construction of a permanent aggregation and processing centre.

#### INVESTMENT NEEDED:



**£18,000**

to expand on the two temporary aggregation centres, helping to contract 3,000 smallholder farmers who will supply around 2,000 chickens each week (Henpark has already signed up an additional 1,364 farmers)

**£19,500**

for three plucking machines and a coldroom to process grown chickens which will help to meet customer preferences (dressing and packaging)

### Chick production

Henpark plans to increase the production of chicks by investing in incubators and hatcheries



#### INVESTMENT NEEDED:

**£6,000**

for three incubators and three hatching units

## Meet the team



**Ishmael Kumwenda**, *managing director* – coordinates and implements community projects in poultry production, food security and livelihood programmes. He has a Master's in Public Policy and Management from the University of York.

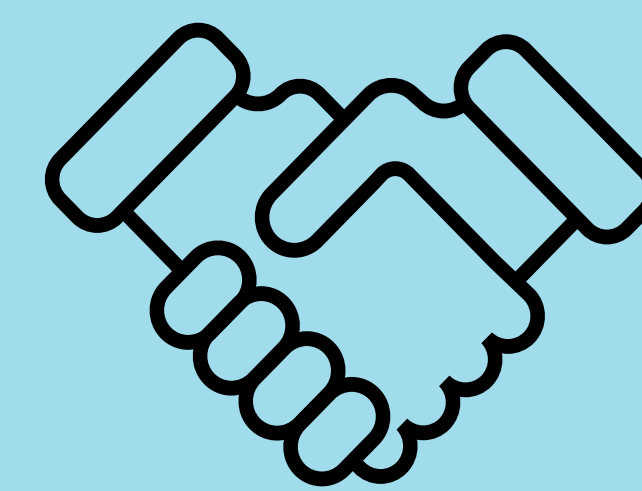


**Walitani Kamija**, *production manager* – oversees the farmer extension programme and manages all aspects of poultry production. He has four years' poultry production experience and has a degree from Lilongwe University of Agriculture and Natural Resources.



**Robert Kondowe**, *finance officer* – responsible for administrative and finance management. He has good negotiation skills and ensures all procedures are compliant with statutory requirements. He holds a BSc in Accounting.

## The impact of the investment



Improved livelihoods of 3,000 smallholder farming families

Increased employment opportunities at the processing unit

